

MsFirmwareUpdater - Firmware Update



CHANGES

Date	Description	Created By	Review By
1.12.2020	Initial Release	VB	MM

Contents

1	About	3
2	Introduction.....	3
3	Preparations	3
4	Process of Updating.....	4
5	Patents, Copyrights and Trademarks	5
6	Contact	5

List of Figures

Figure 1	Main Screen.....	3
Figure 2	Interface Dropdown	4
Figure 4	Port Dropdown	4
Figure 3	Baud Rate Dropdown	4
Figure 6	MsFirmwareUpdater - Firmware Update Succeeded	4
Figure 5	MsFirmwareUpdater - Device Connected	4

1 About

This document is about how to update version of firmware used in products of MACH SYSTEMS s.r.o.

2 Introduction

For updating the device's firmware, a .msf firmware file, **MsFirmwareUpdater** application, data cable (type depends on purchased product), will be needed.

3 Preparations

Connect the device to the computer. Download the **MsFirmwareUpdater** application and the newest version of firmware file for your device - you can find it in the table under the number of version and release date - from www.machsystems.cz/en/support and extract all files to a new folder.

1. Run "MsFirmwareUpdater.exe"
2. Click on "Load from File" button
3. Select the .msf file
4. Select RS-232 interface and the correct COM port.

Shown information under "Load from File" button depends on the selected .msf file. "Variant Id check" shall be checked by default. "New Protocol" checkbox shall be checked by default too. It is recommended to use baud rate of 115200.

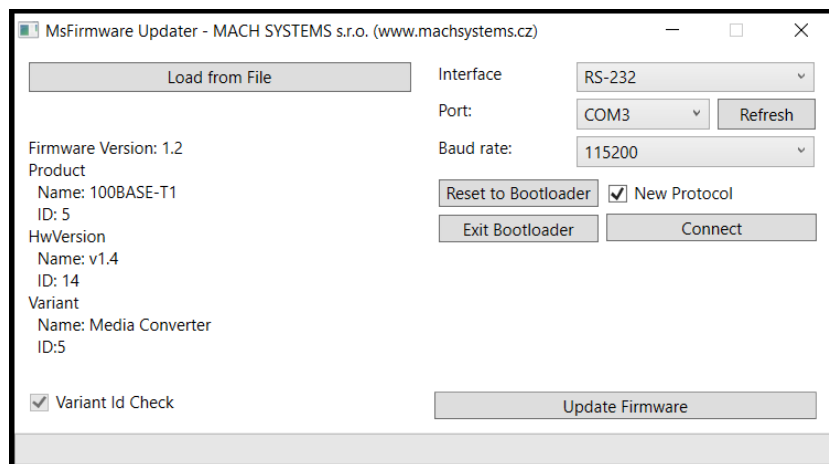


Figure 1 Main Screen

In many cases, you can connect multiple MACH SYSTEMS's devices to the computer. Depending on your device, it can be flashed either over CAN bus, RS-232, or USB (virtual COM port). The MsFirmwareUpdater allows you to select the interface type, port, and baud rate.

It is recommended to use baud rate of 115200.

RS-232	COM3	115200
CAN	COM4	9600
		19200

Figure 2 Interface Dropdown

Figure 3 Port Dropdown

Figure 4 Baud Rate Dropdown

4 Process of Updating

Follow the steps:

1. Select the MSF as described in the previous chapter.
2. Make sure "New Protocol" checkbox is checked.
3. Click "Reset to Bootloader".
Wait until the device is enumerated (usually 5 - 15 seconds).
4. The device will switch into bootloader mode.
Note: For devices connected over USB, the virtual COM port number will differ for normal and bootloader mode of the device. Thus, if you restart the device into bootloader, you shall refresh the ports (Refresh button) so that you can then use the bootloader COM port. In this case, select this new COM port.
5. Click "Connect".
6. Click "Update Firmware" and wait until the flashing is finished.
Progress bar in the bottom shows flashing progress.
7. Once finished, a pop-up windows will be shown. Click "OK".

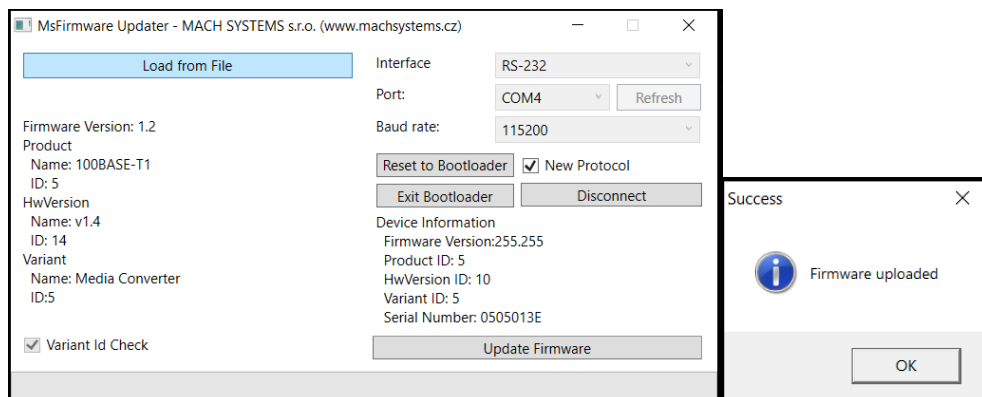


Figure 6 MsFirmwareUpdater - Device Connected

Figure 5 MsFirmwareUpdater - Firmware Update Succeeded

5 Patents, Copyrights and Trademarks

All trademarks are the property of their respective owner. Windows is a registered trademark of Microsoft Corporation in the United States and other countries.

Adobe, the Adobe logo, and Reader are either registered trademarks or trademarks of Adobe Systems Incorporated in the United States and/or other countries.

6 Contact

MACH SYSTEMS s.r.o.

www.machsystems.cz

info@machsystems.cz

Czech Republic



Company registration: 29413893

EU VAT number: CZ29413893