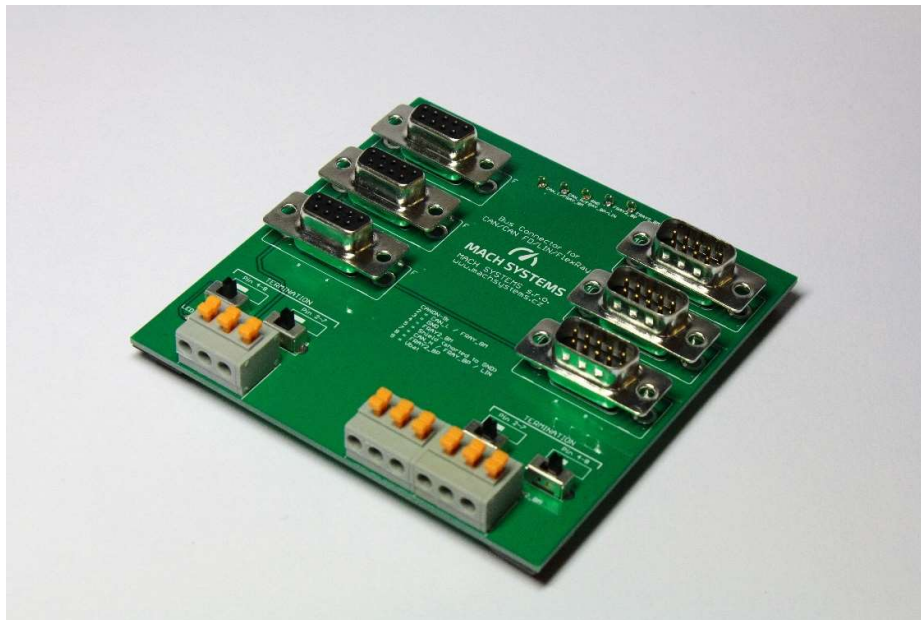


Bus Hub - Connector Board Data Sheet



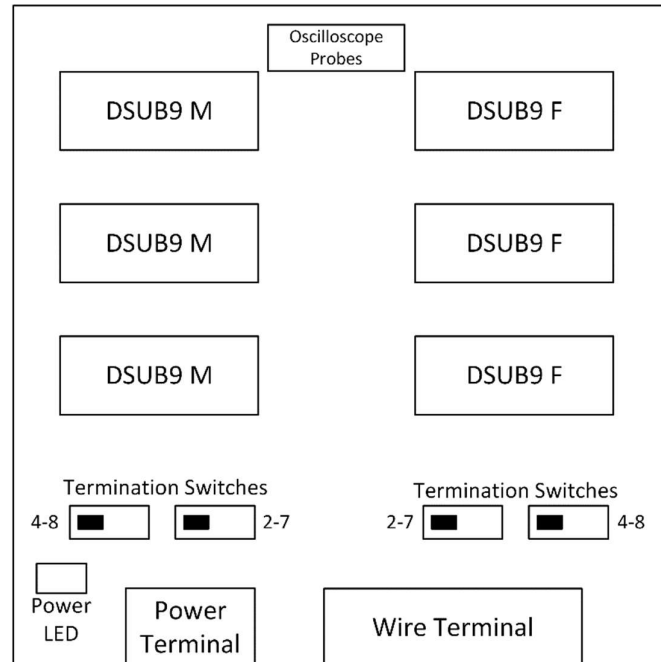
1. Overview

The **Bus Hub (Connector Board)** is an universal board for easy interconnection of bus devices. The board is compatible with **CAN, CAN FD, LIN and FlexRay** networks, and contains six D-SUB9 (CANON-9) connectors (3x male, 3x female) for connecting PC interfaces and other devices like ECUs. All DSUB connectors are wired 1:1. The board contains two switchable terminating resistors for differential networks at each side.

The hub can easily be connected to an existing cable network by a terminal connector, and also contains a terminal block for an external power supply which can be used to power all devices connected. All important signals are equipped with a PCB test point so that an oscilloscope probe can easily be connected.

The hub can be used at the office to easily interconnect PC interfaces and other devices such as ECUs and communication modules. However, it is also useful in the field for connecting an existing bus cable to several devices with D-SUB connectors.

2. Layout



3. Technical Specification

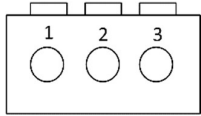
Mechanical	
Dimensions (L x W x H)	100 x 100 x 30 mm
Connectors	3x D-SUB9 M 3x D-SUB9 F 1x Terminal block for power input: 3 pins 2x Terminal block connecting a bus cable: 6 pins All DSUBs wired 1:1
Weight	100 g
Operating Temperature	-30 to 70 °C
Placement	Table (adhesive pads included)
Electrical	
Power Input (Vbat)	max. 20 V DC Polarity Protection <i>Note: Power is not needed for board function</i>
LEDs	1x Power LED (Vbat present)
Resistor Termination	Enabled / Disabled by Switch Button 2x 120 Ohm between pins 7 and 2 2x 100 Ohm between pins 8 and 4
Oscilloscope Probes	5x on important bus signals including GND

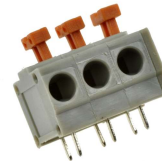
4. Connector Pin Assignment

DSUB-9 Connectors

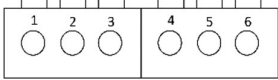
Pin	Description
1	
2	CAN_L / FlexRay_BM
3	GND
4	FlexRay2_BM
5	Shield (internally connected to GND)
6	
7	CAN_H / FlexRay_BP / LIN
8	FlexRay2_BP
9	Vbat (Power Input)

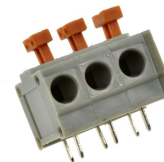
Power Terminal

Terminal Block	Pin	Description
 <p>Front view</p>	1	Shield
	2	GND
	3	Vbat / Power Input

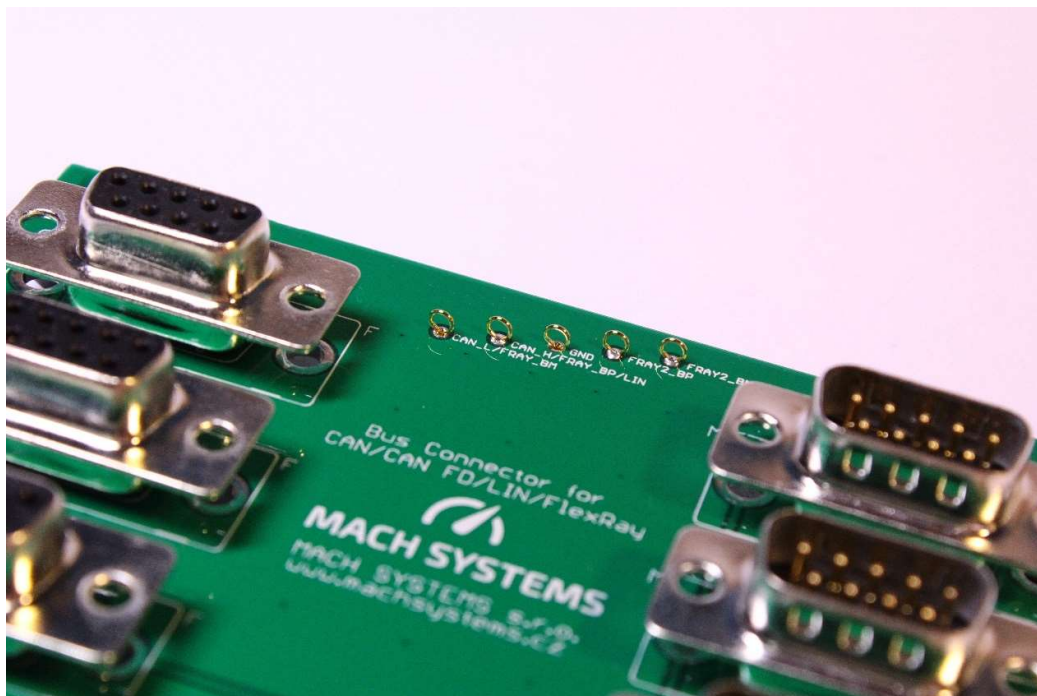
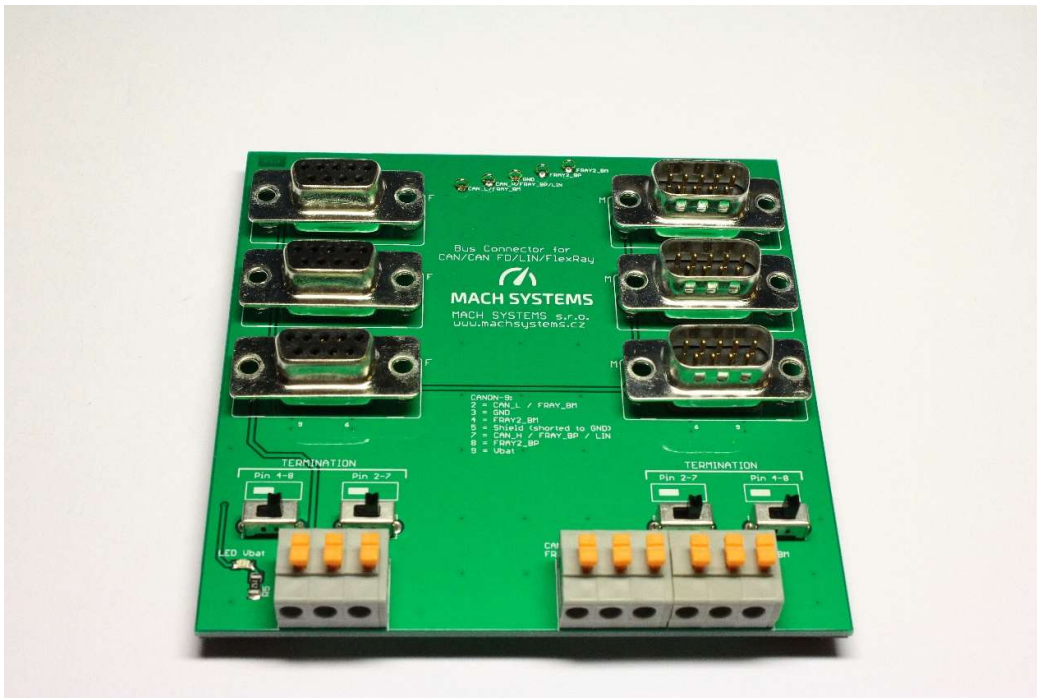


Wire Terminal

Terminal Block	Pin	Description
 <p>Front view</p>	1	CAN_L / FRAY_BM
	2	CAN_H / FRAY_BP / LIN
	3	GND
	4	GND
	5	FRAY2_BP
	6	FRAY2_BM



5. Photos



6. Contact

MACH SYSTEMS s.r.o.

www.machsystems.cz

info@machsystems.cz

Czech Republic



Company Registration: 29413893

VAT no.: CZ29413893